



LUXE VILLAS
PREMIUM LUXURY VILLAS

BY
STAR VENTURES
WAVE CITY GHAZIABAD



➤ WASHROOMS AND PLUMBING

- All CPVC fittings of Astral
- All PVC fittings of Apollo
- All CP fittings, Taps, Showers etc of Kohler
- All Sanitaryware of Kohler
- Designer tiles from Floor to ceiling height
- Shower enclosure or partition in all washrooms
- Vanity with Galaxy Granite top in all Washrooms

➤ FLOORING

- Prada Grey Italian marble with Diamond finish in all Drawing room, lobby, kitchen and Staircase
- Granite on Ramp, Parking and Back area
- Action Tesa Premium Wooden flooring in 3 Bedrooms
- Somany 32X64 tiles in 2 bedrooms

➤ WALLS AND CEILING

- Designer False Ceiling in almost everywhere , Bedrooms , Washrooms , Kitchen , Lobby Etc
- All walls treated with complete POP wall punning
- All Interiors Paints with Ultra Luxury Velvet Touch Paint

➤ ELECTRICAL AND LIGHTING

- Complete Wiring of Havells Brand
- Complete MCB Box and MCBs of Havells Brand
- Whole Villa lighted with almost 150 Panels and COB lights of Syska Brand
- All False ceiling lighted with Strip lights and Cove lights
- Branded fans wherever required
- Branded exhaust fans in all washrooms
- Profile lights and focus lights on exterior and front elevation
- Complete designer switches and switch boards of Oreva

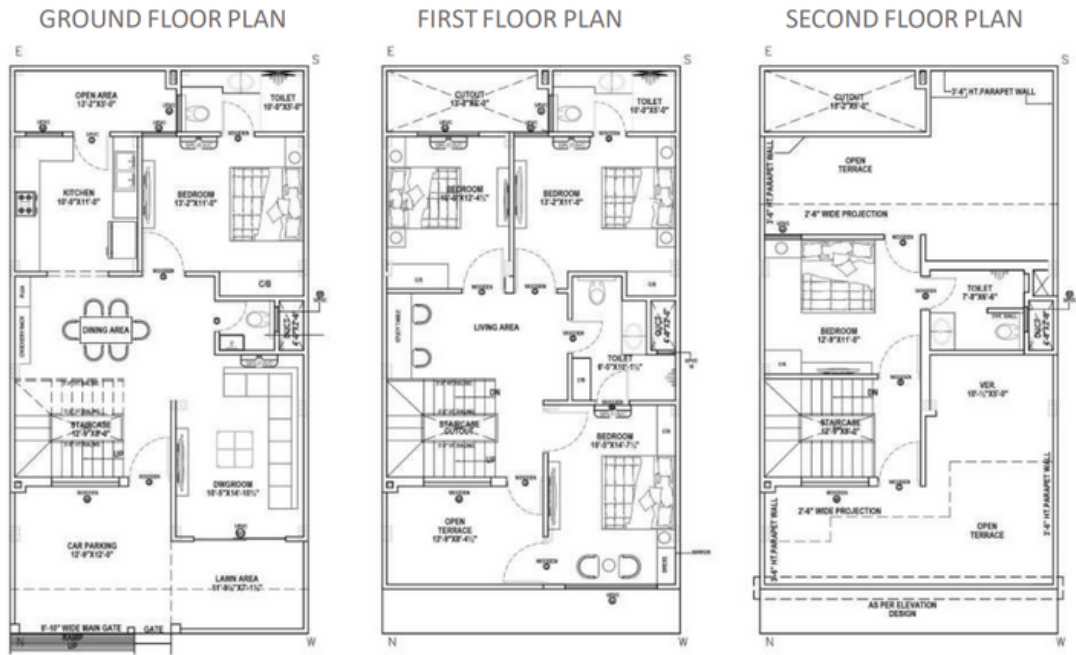
➤ ELEVATION AND EXTERIOR

- Complete designer front elevation with Designer Italian shade tiles and wooden look ACP work
- Designer Ramp and driveway with complete granite work
- Complete Boundary wall with Tiles and Granite work
- Expandable Main Gate to Accommodate bigger cars

➤ DOORS AND WINDOWS

- Saagwan wood Chaukhats with wooden Paneling on Ground Floor
- All windows of Prominence Brand UPVC with Security Glass wherever required
- All Doors and Doorframes of GreenLam Mikasa
- All high grade hardware on doors, with Locks from Dorset, Ozone and Yale.
- Large Bay windows in Drawing room and in Master Bedroom with Mesh Sliders.

FLOOR PLANS TYPE-1



PROJECT IMAGES

SPECIALS

- Modular Kitchen with Acrylic finishes and White Nano top
- Branded Hob, Chimney and RO
- Modular Almirahs in all 5 Bedrooms and 1 Master Bathroom with Action Tesa HDHMR Board and Marino Laminate
- Designer TV panels in all 5 Bedrooms with Action Tesa HDHMR Board and Marino Laminate
- Designer wall panel and TV panel in Drawing Room with Action Tesa HDHMR Board and Marino Laminate
- Crockery unit in Lobby
- Designer Study Unit in 1st Floor Lobby
- Large Jacuzzi Bathtub on Terrace

BY
STAR VENTURES
WAVE CITY GHAZIABAD



www.starventures.in



+91 9958910589



info@starventures.in



Facebook



Instagram